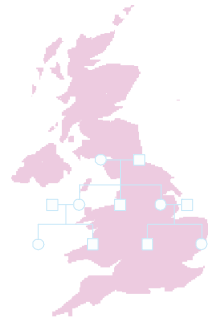


FH01 Spring News



March 2007 Issue 9



6651 Recruits

Thank you everybody

Please remember the study is ongoing. Mammography data needs to be added to the database and all cancers whether screen detected or interval also need to be recorded onto the study database.



CANCER RESEARCH UK



Health Technology Assessment Programme
Sponsored Project

Use of this logo does not constitute endorsement

Consent Forms

The table below details the number of recruits from each centre. There are still a few outstanding consent forms. PLEASE can I have them as soon as possible.

Provisional Final Recruitment figures

SiteName	Total	Site Name	Total
Aberdeen Royal Infirmary	114	North Hampshire Hospital	8
Addenbrooke's Hospital	112	Northampton General Hospital	45
Airedale General Hospital	31	Northwick Park Hospital	33
Ardmillan Breast Screening Centre	303	Nottingham City Hospital	271
Ayr Hospital	3	Parapet Breast Screening Centre	143
Barnsley District General Hospital	40	Princess Royal Hospital, Telford	62
Basildon Hospital	83	Queen Alexandras Hospital	188
Brighton General Hospital	33	Queen Elizabeth Hospital, Gateshead	5
Burnley General Hospital	3	Queen Mary Hospital	2
City Hospital, Birmingham	61	Queen Mary's Hospital	31
Countess of Chester Hospital	68	Queen's Hospital Burton	16
Coventry and Warwickshire Hospital	68	Royal Alexandra Hospital	2
Craigavon Area Hospital	33	Royal Cornwall Hospital (Treliske)	108
Crosshouse Hospital, Kilmarnock	9	Royal Devon & Exeter (Wonford) Hospital	92
Cumberland Infirmary	4	Royal Free Hospital	28
Darlington Memorial Hospital	12	Royal Liverpool Hospital	77
Derby City General Hospital	146	Royal Marsden Hospital	229
Derriford Hospital	25	Royal United Hospital	181
Elizabeth Garrett Anderson & Obstetrics Hospital	43	Sandwell Hospital	9
Frenchay Hospital	149	Scarborough General Hospital	41
Glasgow Royal Infirmary	16	Southend Hospital	110
Guy's Hospital	36	Southport & Formby District General Hospital	51
Hairmyres Hospital	4	St Bartholomew's Hospital	44
Hinchingbrooke Hospital	69	St George's Hospital	108
Hope Hospital	37	St James Hospital, Leeds	99
Ipswich Hospital	40	St Mary's Hospital	20
James Paget Hospital	7	Stobhill Hospital, Glasgow	31
Jarvis Screening Centre	227	University Hospital Aintree	29
Kettering General Hospital	59	University Hospital of North Tees	3
Leighton Hospital, Crewe	49	Victoria Infirmary, Glasgow	81
Macclesfield District General	78	Wales	1121
Mayday Hospital	10	West Suffolk Hospital	13
Medway Hospital	29	Western Infirmary, Glasgow	263
Milton Keynes General Hospital	6	Weston General Hospital	20
New Cross Hospital	43	Whiston Hospital	26
Newcastle General Hospital	103	Wishaw General Hospital	68
Ninewells Hospital	49	Withington Hospital	753
		Worthing Hospital	38
Grand Total 6651			

Missing Data

I am working through all the centres checking for missing data and consent forms. I have sent several centres spreadsheets with this information and will be sending spreadsheets to all centres during the next few weeks.

For more information, please contact:
Sue Thomas, Study Co-ordinator.

Information Team, Breast Test Wales, 18 Cathedral Road, Cardiff. CF11 9LJ